



CLARK
TWO STORY VILLA

L O R A L O M A

VILLAS





LORALOMA

VILLAS

CLARK

3 BEDROOM, 4 BATHROOM
TWO STORY

Designed to evolve with the times, the Villa is balanced in aesthetics and approach to working with the land, not against it. Like all residences in Loraloma, this home is designed for discovery and delight – changing views, unique features, and everyday spaces elevated with ingenuity and purpose. Each Villa is thoughtfully sited with optimized, protected views and minimal exposure to the sun while still allowing for plenty of natural light. With choices between Modern and Timeless designs, both offer access to all three bedrooms on the main level creating an intentional connection that compliments a variety of family needs and lifestyles. Outdoor, find your own oasis in the beautiful Live Oaks, with only a short walk to the amenity-rich campus of Limestone Gulch.

The Villas offer the most flexible floor plan to accommodate families of all sizes and stages.



Clark Villa Two-Story pictured above to show general design intent for Villa Homes.



ARETÉ collective



Floor plans are intended to give a general indication of the proposed layout only. Images and dimensions are not intended to form part of any contract or warranty.



LORALOMA

VILLAS

CLARK
3 BEDROOM, 4 BATHROOM
TWO STORY

KEY FEATURES

- SPACIOUS INDOOR ENTERTAINMENT AREAS CONNECTED TO THE OUTDOOR LIVING
- PRIVATE DINING SPACE
- ADAPTIVE FLEX SPACES
- PRIVATE OUTDOOR TERRACE OFF PRIMARY SUITE
- HOME OFFICE
- MULTIPLE INTIMATE LIVING SPACES (READING NOOKS, POCKET OFFICES)
- THOUGHTFUL AND ORGANIZED STORAGE
- DEDICATED LAUNDRY AND PANTRY
- 2-3 CAR GARAGE



Villa Interior

Clark Villa Timeless pictured above to show general design intent for Villa Homes.



ARETÉ *collective*



Floor plans are intended to give a general indication of the proposed layout only. Images and dimensions are not intended to form part of any contract or warranty.

LORALOMA

TWO STORY VILLA
3 BEDROOM, 4 BATHROOM

MAIN LEVEL FLOOR PLAN

HOME FEATURES

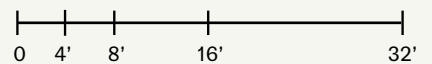
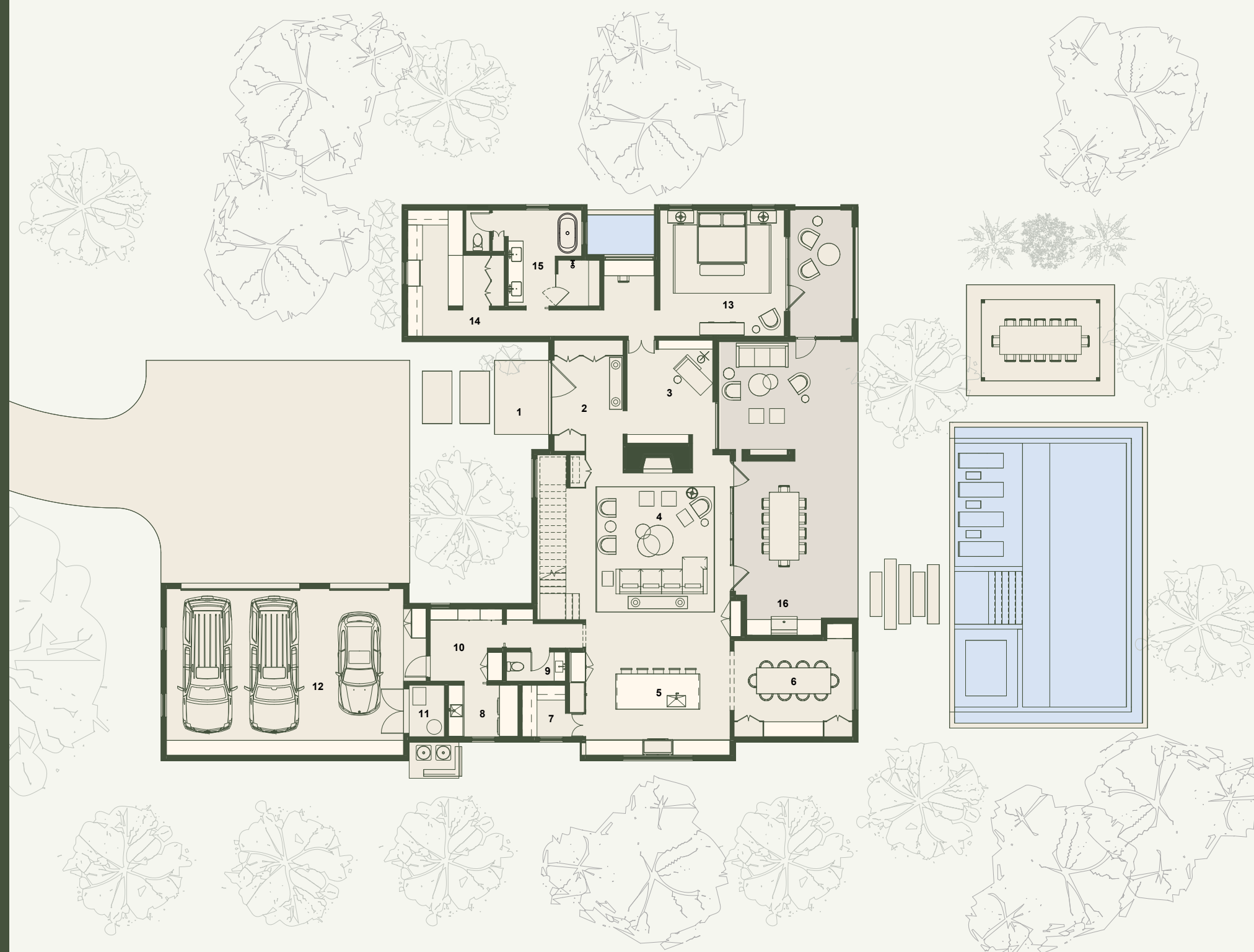
- SPACIOUS INDOOR ENTERTAINMENT AREAS CONNECTED TO THE OUTDOOR LIVING
- PRIVATE DINING SPACE
- ADAPTIVE FLEX SPACES
- WALK-IN PANTRY & WET BAR
- PRIVATE OUTDOOR PATIOS & TERRACE OFF PRIMARY SUITES
- HOME OFFICE
- MULTIPLE INTIMATE LIVING SPACES
- 3 CAR GARAGE

AREA BREAKDOWN

UPPER LEVEL	1,882 ft ²
MAIN LEVEL	3,001 ft ²
TOTAL CONDITIONED AREA	4,883 ft²
<hr/>	
GARAGE & MECHANICAL	862 ft ²
COVERED TERRACES	1,051 ft ²
TOTAL UNCONDITIONED AREA	1,913 ft²

LEGEND

- 01 FRONT PORCH
- 02 ENTRY
- 03 SITTING ROOM
13'-10" x 11'-10"
- 04 LIVING ROOM
22'-1" x 22'-2"
- 05 KITCHEN
17'-9" x 19'-5"
- 06 DINING ROOM
12'-11" x 15'-11"
- 07 PANTRY
- 08 LAUNDRY
- 09 POWDER ROOM
- 10 MUDROOM
- 11 MECHANICAL ROOM
- 12 3 CAR GARAGE
- 13 PRIMARY SUITE
17'-0" x 16'-9"
- 14 PRIMARY WALK-IN CLOSET
- 15 PRIMARY BATH
- 16 OUTDOOR KITCHEN



Floor plans are intended to give a general indication of the proposed layout only. Images and dimensions are not intended to form part of any contract or warranty.

LORALOMA

TWO STORY VILLA
3 BEDROOM, 4 BATHROOM

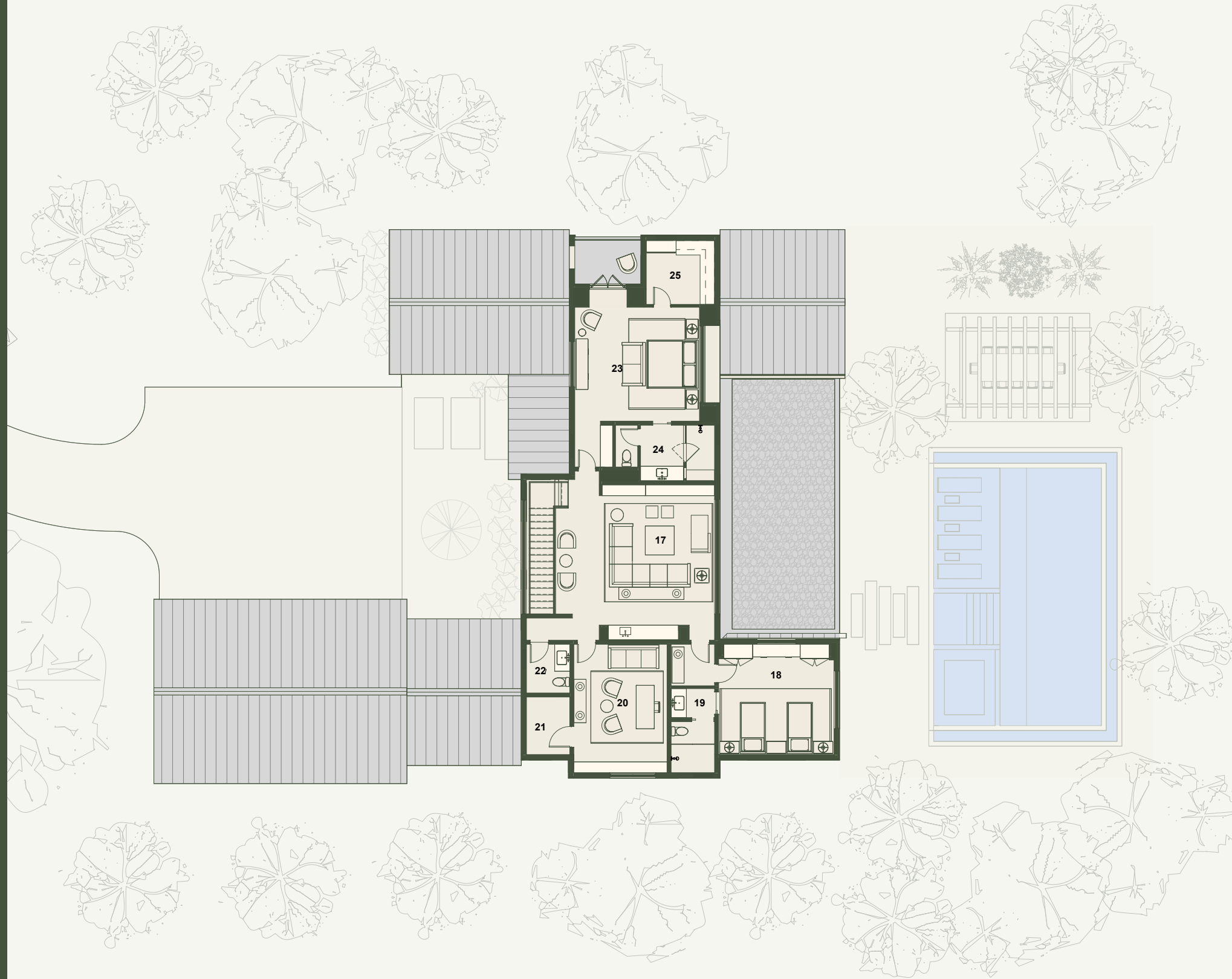
UPPER LEVEL FLOOR PLAN

HOME FEATURES

- SPACIOUS INDOOR ENTERTAINMENT AREAS CONNECTED TO THE OUTDOOR LIVING
- PRIVATE DINING SPACE
- ADAPTIVE FLEX SPACES
- WALK-IN PANTRY & WET BAR
- PRIVATE OUTDOOR PATIOS & TERRACE OFF PRIMARY SUITES
- HOME OFFICE
- MULTIPLE INTIMATE LIVING SPACES
- 3 CAR GARAGE

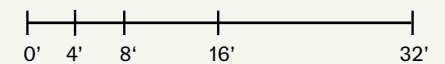
AREA BREAKDOWN

UPPER LEVEL	1,882 ft ²
MAIN LEVEL	3,001 ft ²
TOTAL CONDITIONED AREA	4,883 ft²
GARAGE & MECHANICAL	862 ft ²
COVERED TERRACES	1,051 ft ²
TOTAL UNCONDITIONED AREA	1,913 ft²



LEGEND

- 17 GAME ROOM
21' 6" x 22'-0"
- 18 BEDROOM
15'-3" x 15'-11"
- 19 BATHROOM
- 20 OFFICE / FLEX ROOM
17'-9" x 12'-11"
- 21 STORAGE
- 22 POWDER ROOM
- 23 SECONDARY SUITE
15'-9" x 17'-3"
- 24 SECONDARY SUITE BATH
- 25 SECONDARY WALK-IN CLOSET



Floor plans are intended to give a general indication of the proposed layout only. Images and dimensions are not intended to form part of any contract or warranty.



ARETE collective



IMI
WORLDWIDE PROPERTIES



CLARK
WALKOUT VILLA

L O R A L O M A

VILLAS



LORALOMA

Clark Walkout Villa Front View

Clark Villa Timeless pictured above to show general design intent for Villa Homes.



ARETÉ collective



IMI
WORLDWIDE PROPERTIES

Floor plans are intended to give a general indication of the proposed layout only. Images and dimensions are not intended to form part of any contract or warranty.



LORALOMA

VILLAS

CLARK
4 BEDROOM, 5.5 BATHROOM
WALKOUT

Designed to evolve with the times, the Villa is balanced in aesthetics and approach to working with the land, not against it. Like all residences in Loraloma, this home is designed for discovery and delight – changing views, unique features, and everyday spaces elevated with ingenuity and purpose. Each Villa is thoughtfully sited with optimized, protected views and minimal exposure to the sun while still allowing for plenty of natural light. With choices between Modern and Timeless designs, both offer access to all three bedrooms on the main level creating an intentional connection that compliments a variety of family needs and lifestyles. Outdoor, find your own oasis in the beautiful Live Oaks, with only a short walk to the amenity-rich campus of Limestone Gulch.

The Villas offer the most flexible floor plan to accommodate families of all sizes and stages.



Clark Walkout Villa Rear View

Clark Villa Timeless pictured above to show general design intent for Villa Homes.



ARETÉ collective



WORLDWIDE PROPERTIES

Floor plans are intended to give a general indication of the proposed layout only. Images and dimensions are not intended to form part of any contract or warranty.



LORALOMA

VILLAS

CLARK
4 BEDROOM, 5.5 BATHROOM
WALKOUT

KEY FEATURES

- SPACIOUS INDOOR ENTERTAINMENT AREAS CONNECTED TO THE OUTDOOR LIVING
- PRIVATE DINING SPACE
- ADAPTIVE FLEX SPACES
- PRIVATE OUTDOOR TERRACE OFF PRIMARY SUITE
- HOME OFFICE
- MULTIPLE INTIMATE LIVING SPACES (READING NOOKS, POCKET OFFICES)
- THOUGHTFUL AND ORGANIZED STORAGE
- DEDICATED LAUNDRY AND PANTRY
- 2-3 CAR GARAGE



Villa Interior

Clark Villa Timeless pictured above to show general design intent for Villa Homes.



ARETÉ *collective*



Floor plans are intended to give a general indication of the proposed layout only. Images and dimensions are not intended to form part of any contract or warranty.

LORALOMA

WALKOUT VILLA 4 BEDROOM, 5.5 BATHROOM

MAIN LEVEL FLOOR PLAN

HOME FEATURES

- SPACIOUS INDOOR ENTERTAINMENT AREAS CONNECTED TO THE OUTDOOR LIVING
- PRIVATE DINING SPACE
- ADAPTIVE FLEX SPACES
- WALK-IN PANTRY
- PRIVATE OUTDOOR TERRACE OFF PRIMARY SUITE
- HOME OFFICE
- MULTIPLE INTIMATE LIVING SPACES
- 3 CAR GARAGE

AREA BREAKDOWN

MAIN LEVEL	2,683ft ²
LOWER LEVEL	2,411 ft ²
TOTAL CONDITIONED AREA	5,094 ft²
GARAGE & MECHANICAL	856 ft ²
COVERED TERRACES	1,500 ft ²
TOTAL UNCONDITIONED AREA	2,356 ft²



LEGEND

- 01 FRONT PORCH
- 02 ENTRY
- 03 SITTING ROOM
11' 11" x 14' 0"
- 04 LIVING ROOM
21' 9" x 22' 2"
- 05 KITCHEN
19' 5" x 18' 4"
- 06 DINNING ROOM
14' 0" x 16' 0"
- 07 PANTRY
- 08 LAUNDRY
- 09 POWDER ROOM
- 10 MUDROOM
- 11 MECHANICAL ROOM
- 12 3 CAR GARAGE
- 13 PRIMARY SUITE
17' 0" x 15' 4"
- 14 PRIMARY WALK-IN CLOSET
- 15 PRIMARY BATH
- 16 OUTDOOR KITCHEN

LORALOMA

WALKOUT VILLA 4 BEDROOM, 5.5 BATHROOM

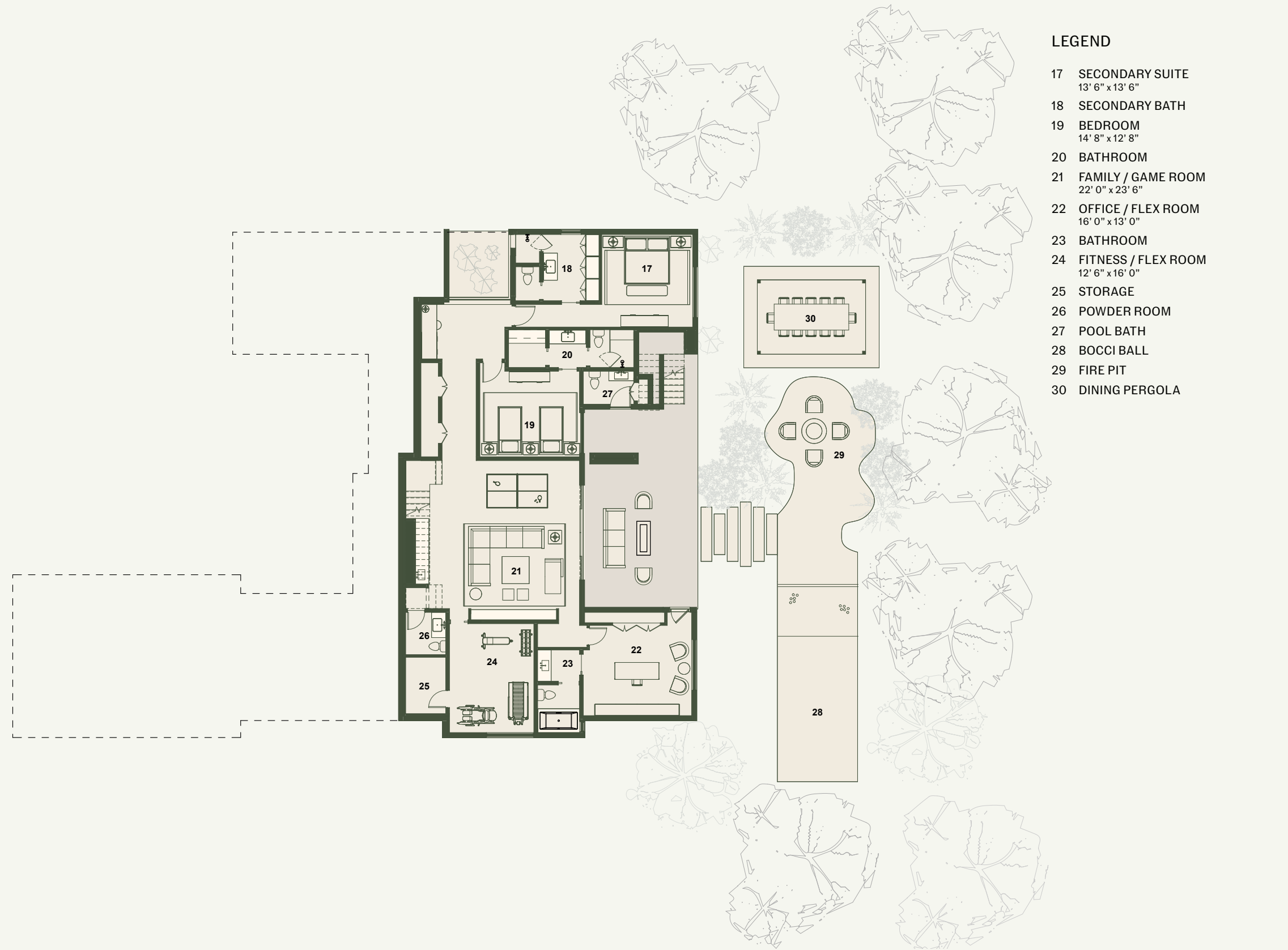
LOWER LEVEL FLOOR PLAN

HOME FEATURES

- SPACIOUS INDOOR ENTERTAINMENT AREAS CONNECTED TO THE OUTDOOR LIVING
- PRIVATE DINING SPACE
- ADAPTIVE FLEX SPACES
- WALK-IN PANTRY
- PRIVATE OUTDOOR TERRACE OFF PRIMARY SUITE
- HOME OFFICE
- MULTIPLE INTIMATE LIVING SPACES
- 3 CAR GARAGE

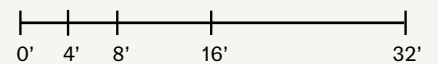
AREA BREAKDOWN

MAIN LEVEL	2,683ft ²
LOWER LEVEL	2,411 ft ²
TOTAL CONDITIONED AREA	5,094 ft²
GARAGE & MECHANICAL	856 ft ²
COVERED TERRACES	1,500 ft ²
TOTAL UNCONDITIONED AREA	2,356 ft²



LEGEND

- 17 SECONDARY SUITE
13' 6" x 13' 6"
- 18 SECONDARY BATH
- 19 BEDROOM
14' 8" x 12' 8"
- 20 BATHROOM
- 21 FAMILY / GAME ROOM
22' 0" x 23' 6"
- 22 OFFICE / FLEX ROOM
16' 0" x 13' 0"
- 23 BATHROOM
- 24 FITNESS / FLEX ROOM
12' 6" x 16' 0"
- 25 STORAGE
- 26 POWDER ROOM
- 27 POOL BATH
- 28 BOCCI BALL
- 29 FIRE PIT
- 30 DINING PERGOLA



Floor plans are intended to give a general indication of the proposed layout only. Images and dimensions are not intended to form part of any contract or warranty.



ARETÉ collective



WORLDWIDE PROPERTIES