



SILVERLEAF
TWO STORY VILLA

L O R A L O M A



LORALOMA

VILLAS

SILVERLEAF

4 BEDROOM, 4.5 BATHROOM
TWO STORY VILLA

Designed to evolve with the times, the Villa is balanced in aesthetics and approach to working with the land, not against it. Like all residences in Loraloma, this home is designed for discovery and delight – changing views, unique features, and everyday spaces elevated with ingenuity and purpose. Each Villa is thoughtfully sited with optimized, protected views and minimal exposure to the sun while still allowing for plenty of natural light. With choices between Modern and Timeless designs, both offer access to all three bedrooms on the main level creating an intentional connection that compliments a variety of family needs and lifestyles. Outdoor, find your own oasis in the beautiful Live Oaks, with only a short walk to the amenity-rich campus of Limestone Gulch.

The Villas offer the most flexible floor plan to accommodate families of all sizes and stages.



Clark Villa Timeless pictured above to show general design intent for Villa Homes.



ARETÉ *collective*



Floor plans are intended to give a general indication of the proposed layout only. Images and dimensions are not intended to form part of any contract or warranty.



LORALOMA

VILLAS

SILVERLEAF
4 BEDROOM, 4.5 BATHROOM
TWO STORY VILLA

KEY FEATURES

- SPACIOUS INDOOR ENTERTAINMENT AREAS CONNECTED TO THE OUTDOOR LIVING
- PRIVATE DINING SPACE
- ADAPTIVE FLEX SPACES
- PRIVATE OUTDOOR TERRACE OFF PRIMARY SUITE
- HOME OFFICE
- MULTIPLE INTIMATE LIVING SPACES (READING NOOKS, POCKET OFFICES)
- THOUGHTFUL AND ORGANIZED STORAGE
- DEDICATED LAUNDRY AND PANTRY
- 2-3 CAR GARAGE



Clark Villa Timeless pictured above to show general design intent for Villa Homes.



ARETÉ *collective*



Floor plans are intended to give a general indication of the proposed layout only. Images and dimensions are not intended to form part of any contract or warranty.

LORALOMA

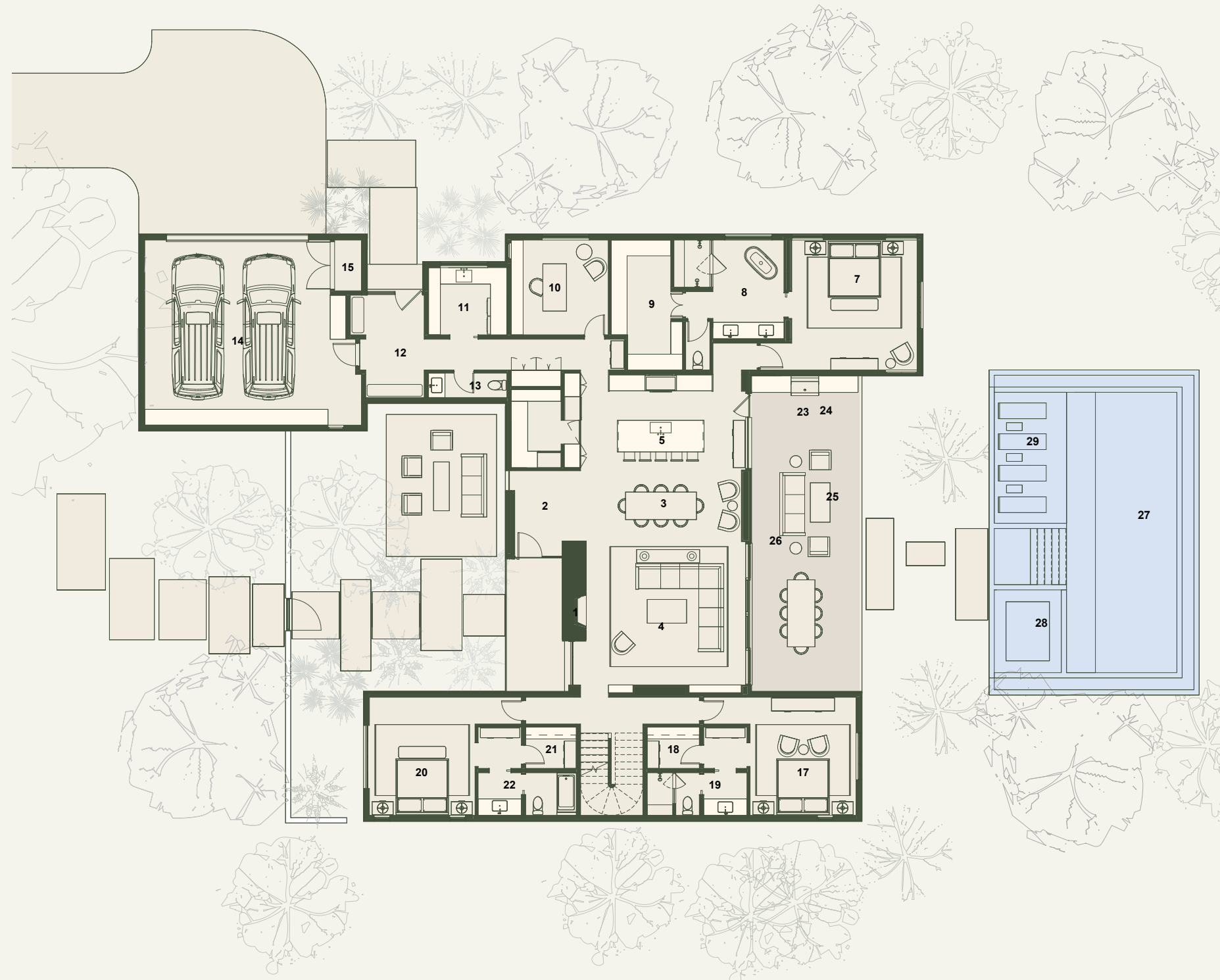
TWO STORY VILLA
4 BEDROOM, 4.5 BATHROOM

MAIN LEVEL FLOOR PLAN HOME FEATURES

- ENTRY COURTYARD
- DOOR - TO - TRAIL ACCESS
- FIRE PIT WITH A LARGE SEATING AREA
- REAR COVERED OUTDOOR LIVING SPACES
- OUTDOOR KITCHEN AND DINING

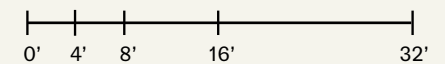
AREA BREAKDOWN

UPPER LEVEL	985 ft ²
MAIN LEVEL	3,384 ft ²
TOTAL CONDITIONED AREA	4,369 ft²
GARAGE & MECHANICAL	694 ft ²
COVERED TERRACES	1,724 ft ²
TOTAL UNCONDITIONED AREA	2,418 ft²



LEGEND

- 01 ENTRY PORCH
- 02 ENTRY
- 03 DINING
21'11" x 8'11"
- 04 LIVING
20'3" x 18'3"
- 05 KITCHEN
20'11" x 12'3"
- 06 PANTRY
- 07 OFFICE
- 08 POWDER ROOM
- 09 PRIMARY BEDROOM
15'11" x 16'6"
- 10 PRIMARY BATHROOM
14'0" x 12'6"
- 11 PRIMARY CLOSET
7'7" x 16'6"
- 12 SIDE ENTRY
- 13 MUDROOM
- 14 LAUNDRY
9'11" x 8'5"
- 15 GARAGE
- 16 MECHANICAL
- 17 STAIRS
- 18 BEDROOM
13'5" x 15'0"
- 19 WALK-IN CLOSET
- 20 BATHROOM
- 21 BEDROOM
13'5" x 15'0"
- 22 WALK-IN CLOSET
- 23 BATHROOM
- 24 OUTDOOR KITCHEN
- 25 OUTDOOR DINING
- 26 OUTDOOR LIVING
- 27 POOL
- 28 HOT TUB
- 29 BAJA SHELF



Floor plans are intended to give a general indication of the proposed layout only. Images and dimensions are not intended to form part of any contract or warranty.



ARETÉ collective



IMI
WORLDWIDE PROPERTIES



LORALOMA

TWO STORY VILLA
4 BEDROOM, 4.5 BATHROOM

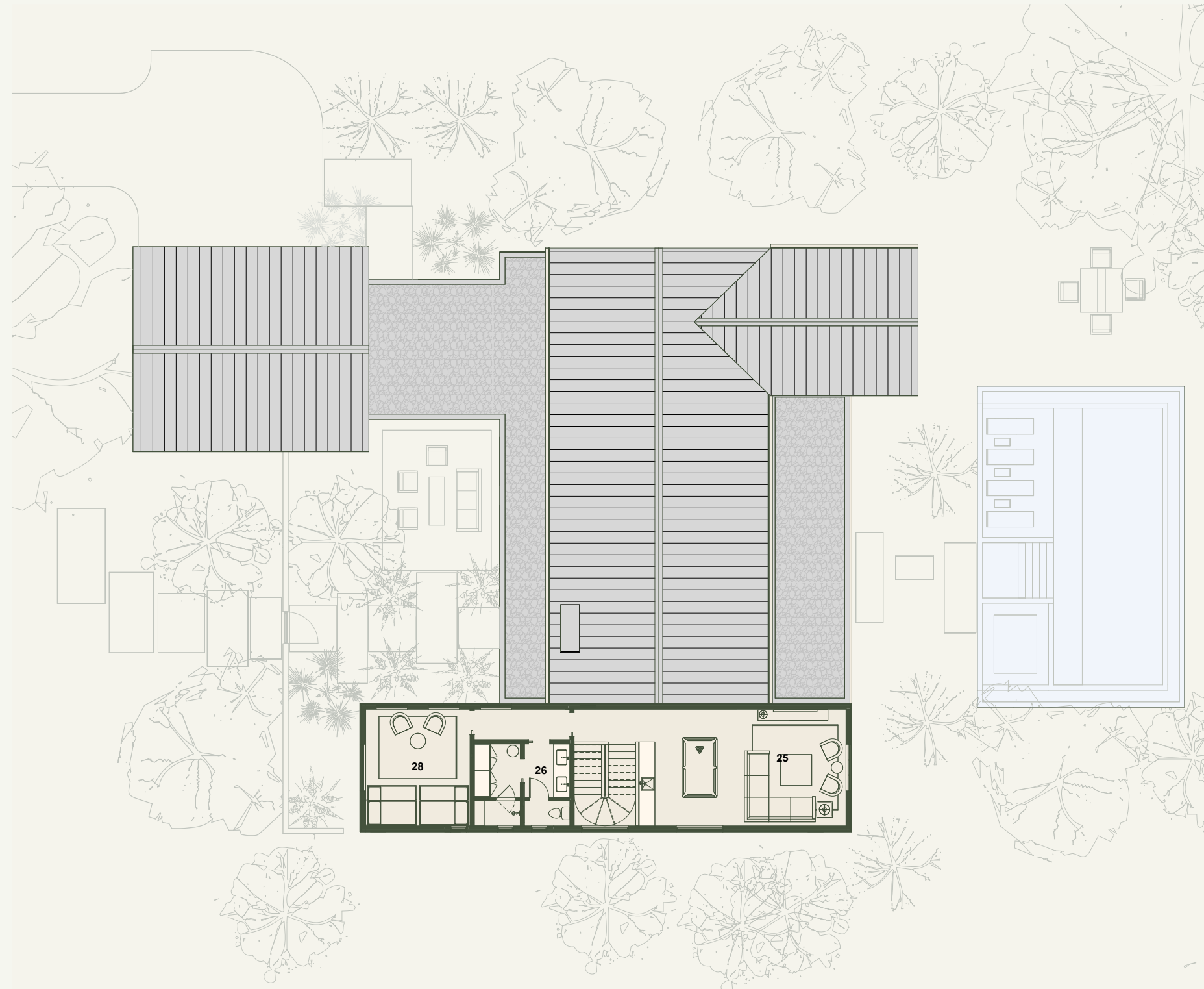
UPPER LEVEL FLOOR PLAN

HOME FEATURES

- ENTRY COURTYARD
- DOOR - TO - TRAIL ACCESS
- REAR COVERED OUTDOOR LIVING SPACES
- OUTDOOR KITCHEN AND DINING

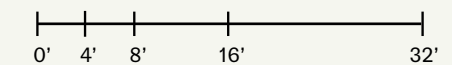
AREA BREAKDOWN

UPPER LEVEL	985 ft ²
MAIN LEVEL	3,384 ft ²
TOTAL CONDITIONED AREA	4,369 ft²
GARAGE & MECHANICAL	694 ft ²
COVERED TERRACES	1,724 ft ²
TOTAL UNCONDITIONED AREA	2,418 ft²



LEGEND

- 30 GAME ROOM
17' 5" x 12' 5"
- 31 MEDIA FAMILY ROOM
14' 11" x 13' 1"
- 32 BUNK ROOM
15' 0" x 13' 10"
- 33 BATHROOM



Floor plans are intended to give a general indication of the proposed layout only. Images and dimensions are not intended to form part of any contract or warranty.



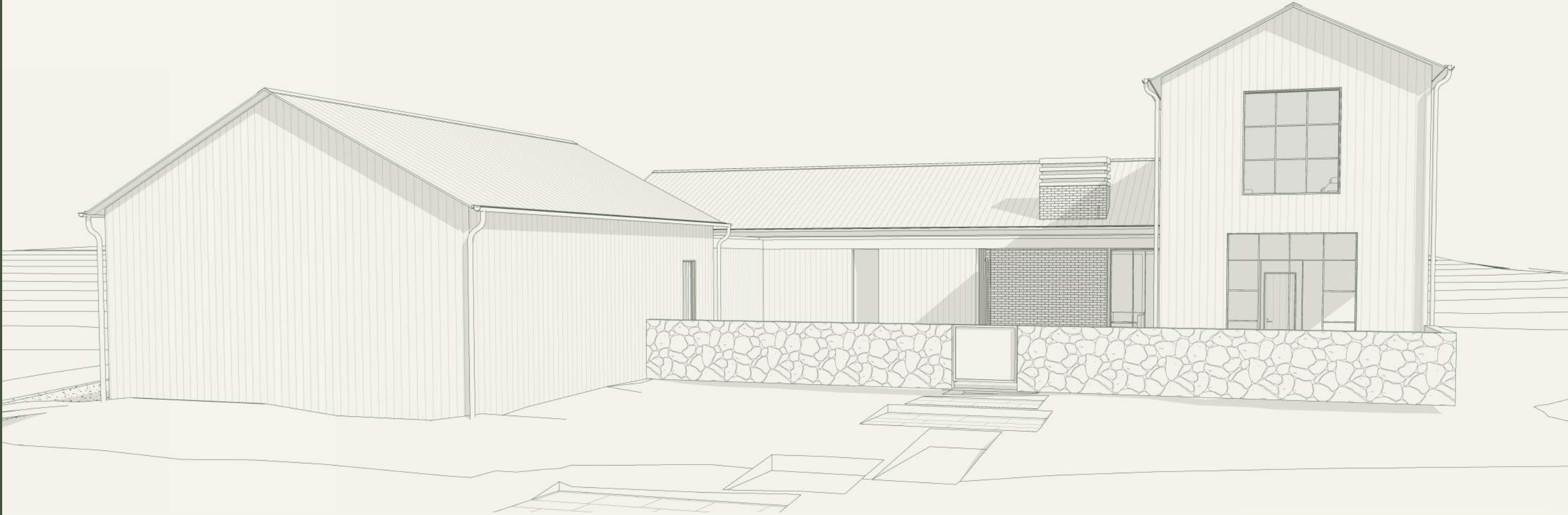
ARETÉ collective



WORLDWIDE PROPERTIES

TWO STORY VILLA

CONCEPTUAL PERSPECTIVE - FRONT VIEW



TWO STORY VILLA
CONCEPTUAL PERSPECTIVE - FRONT VIEW

