



CLARK  
TWO STORY VILLA

L O R A L O M A



# VILLAS



Clark Walkout Villa Front View

Clark Villa Walkout Timeless pictured above to show general design intent for Villa Homes.



ARETÉ *collective*



Floor plans are intended to give a general indication of the proposed layout only. Images and dimensions are not intended to form part of any contract or warranty.





L O R A L O M A

## VILLAS

CLARK  
3 BEDROOM, 4 BATHROOM  
TWO STORY

Designed for discovery and delight, the Villas offer the most flexible floor plan accommodating families of all sizes and stages.

The Villa is balanced in aesthetics and approach to working with the land, not against it. Similar to all the other residences in Loraloma, this home boasts stunning views, unique features, and everyday spaces that are elevated with ingenuity and purpose. Each Villa is thoughtfully sited with optimized, protected views and minimal exposure to the sun while still allowing for plenty of natural light. With choices between Modern and Timeless designs, both offer access to all three bedrooms on the main level creating an intentional connection that compliments a variety of family needs and lifestyles. Outdoors, find your own oasis in the beautiful Live Oaks, only a short walk to the amenity-rich campus of Limestone Gulch.



Clark Villa Walkout Timeless pictured above to show general design intent for Villa Homes.



ARETÉ *collective*



Floor plans are intended to give a general indication of the proposed layout only. Images and dimensions are not intended to form part of any contract or warranty.





L O R A L O M A

## VILLAS

CLARK

3 BEDROOM, 4 BATHROOM  
TWO STORY

### KEY FEATURES

- SPACIOUS INDOOR ENTERTAINMENT AREAS  
CONNECTED TO THE OUTDOOR LIVING
- PRIVATE DINING SPACE
- ADAPTIVE FLEX SPACES
- PRIVATE OUTDOOR TERRACE OFF PRIMARY SUITE
- HOME OFFICE
- MULTIPLE INTIMATE LIVING SPACES  
(READING NOOKS, POCKET OFFICES)
- THOUGHTFUL AND ORGANIZED STORAGE
- DEDICATED LAUNDRY AND PANTRY
- 2 -3 CAR GARAGE



Villa Interior

Clark Villa Walkout Timeless pictured above to show general design intent for Villa Homes.



ARETÉ *collective*



WORLDWIDE PROPERTIES

Floor plans are intended to give a general indication of the proposed layout only. Images and dimensions are not intended to form part of any contract or warranty.



LORALOMA

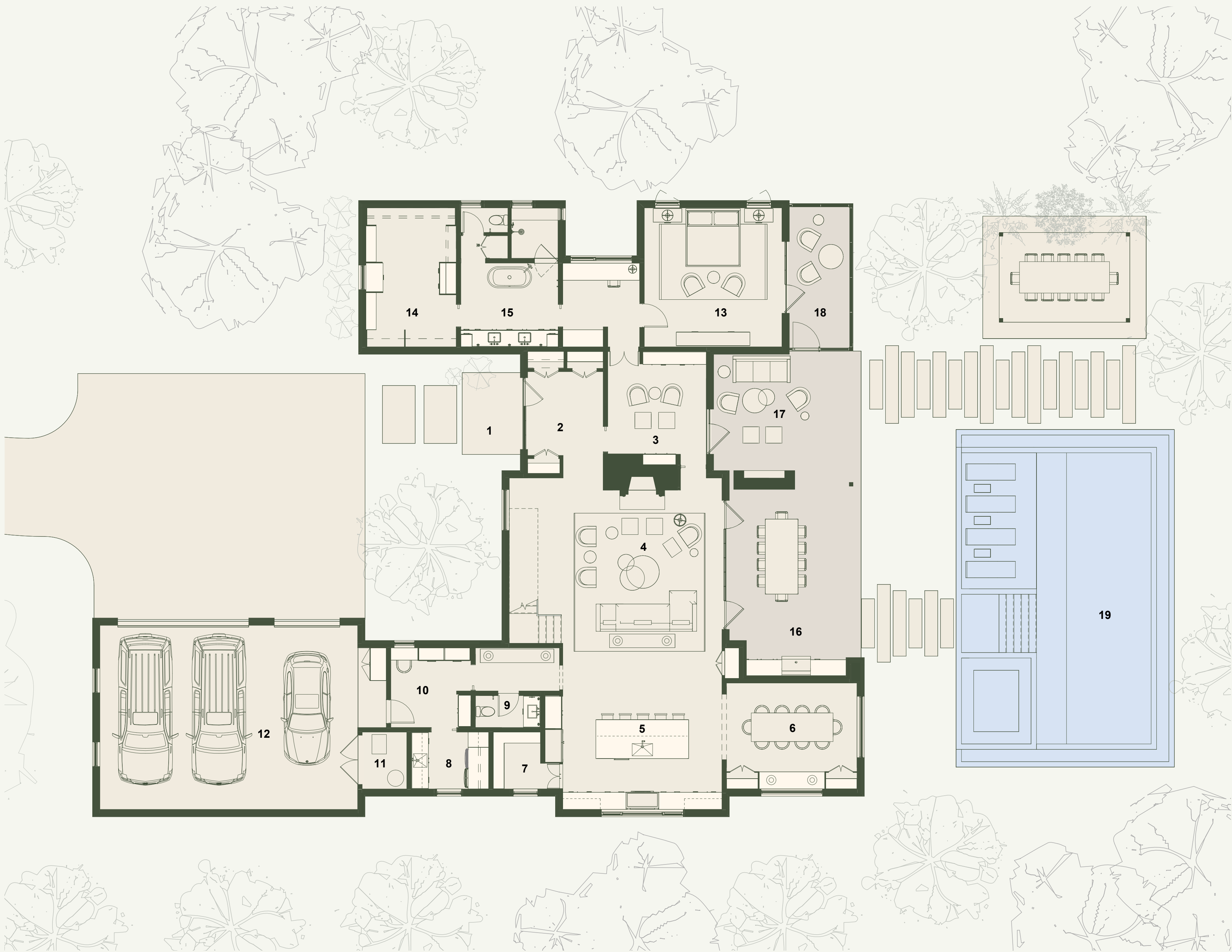
CLARK  
3 BEDROOM, 4 BATHROOM  
TWO STORY

MAIN LEVEL FLOOR PLAN  
HOME FEATURES

- SPACIOUS INDOOR ENTERTAINMENT AREAS  
CONNECTED TO THE OUTDOOR LIVING
- PRIVATE DINING SPACE
- ADAPTIVE FLEX SPACES
- WALK-IN PANTRY & WET BAR
- PRIVATE OUTDOOR PATIOS & TERRACE OFF  
PRIMARY SUITES
- HOME OFFICE
- MULTIPLE INTIMATE LIVING SPACES
- 3 CAR GARAGE

AREA BREAKDOWN

UPPER LEVEL	1,860 ft <sup>2</sup>
MAIN LEVEL	2,832 ft <sup>2</sup>
<hr/>	
TOTAL CONDITIONED AREA	4,692 ft <sup>2</sup>
GARAGE & MECHANICAL	856 ft <sup>2</sup>
COVERED TERRACES	952 ft <sup>2</sup>
<hr/>	
TOTAL UNCONDITIONED AREA	1,808 ft <sup>2</sup>



- LEGEND
- 01 FRONT PORCH
  - 02 ENTRY
  - 03 SITTING ROOM  
12'-0" x 12'-7"
  - 04 LIVING ROOM  
20'-2" x 19'-6"
  - 05 KITCHEN  
14'-6" x 19'-6"
  - 06 DINING ROOM  
12'-11" x 15'-11"
  - 07 PANTRY
  - 08 LAUNDRY
  - 09 POWDER ROOM
  - 10 MUDROOM
  - 11 MECHANICAL ROOM
  - 12 3 CAR GARAGE
  - 13 PRIMARY SUITE  
17'-0" x 16'-10"
  - 14 PRIMARY WALK-IN CLOSET
  - 15 PRIMARY BATH
  - 16 OUTDOOR KITCHEN
  - 17 OUTDOOR LIVING
  - 18 SCREENED PORCH
  - 19 POOL



LORALOMA

CLARK  
3 BEDROOM, 4 BATHROOM  
TWO STORY

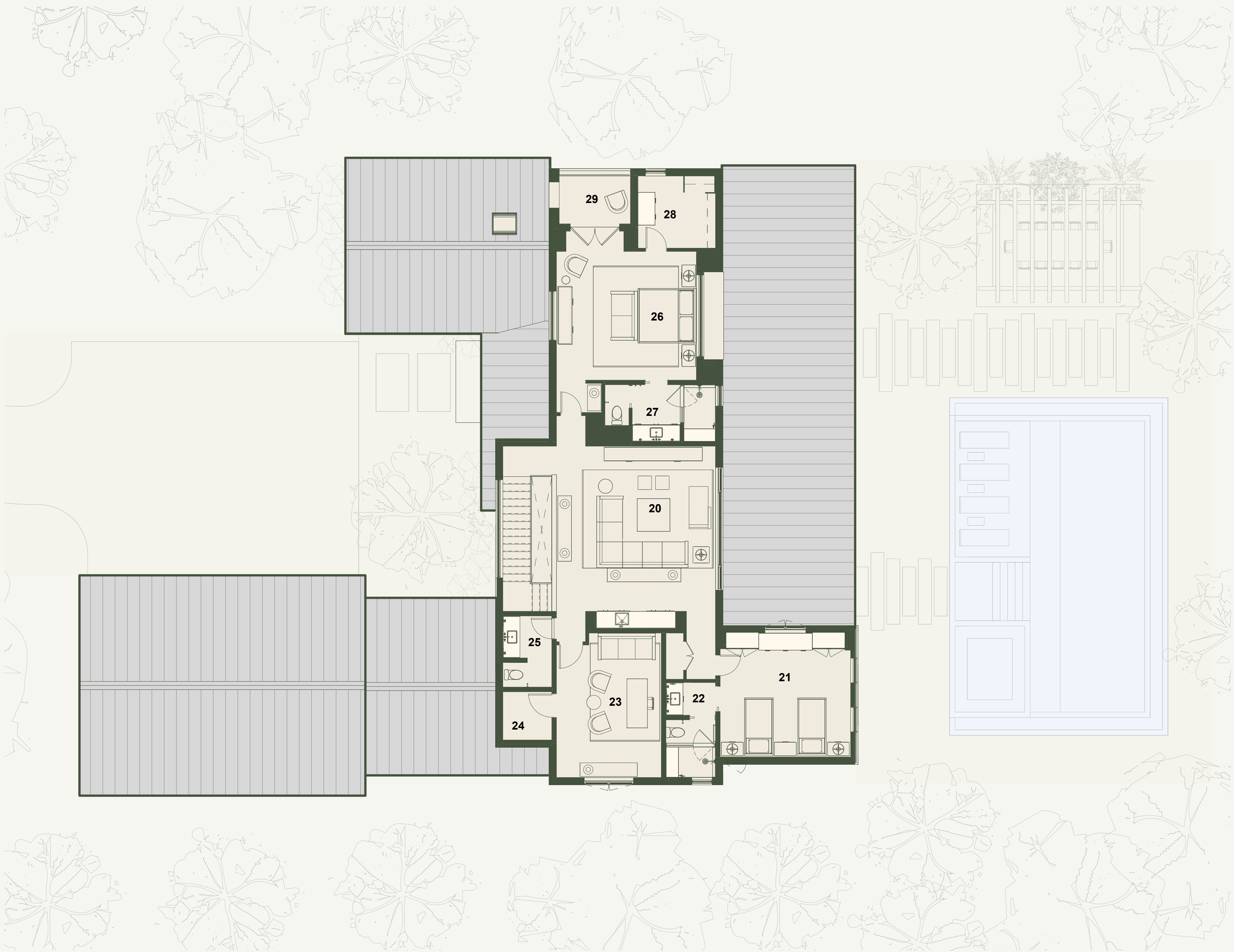
UPPER LEVEL FLOOR PLAN

HOME FEATURES

- SPACIOUS INDOOR ENTERTAINMENT AREAS  
CONNECTED TO THE OUTDOOR LIVING
- PRIVATE DINING SPACE
- ADAPTIVE FLEX SPACES
- WALK-IN PANTRY & WET BAR
- PRIVATE OUTDOOR PATIOS & TERRACE OFF  
PRIMARY SUITES
- HOME OFFICE
- MULTIPLE INTIMATE LIVING SPACES
- 3 CAR GARAGE

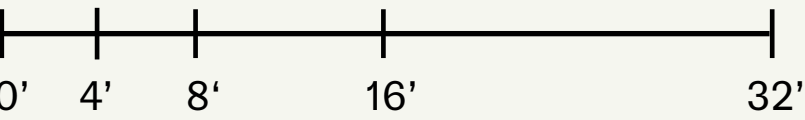
AREA BREAKDOWN

UPPER LEVEL	1,860 ft <sup>2</sup>
MAIN LEVEL	2,832 ft <sup>2</sup>
<hr/>	
TOTAL CONDITIONED AREA	4,692 ft <sup>2</sup>
GARAGE & MECHANICAL	856 ft <sup>2</sup>
COVERED TERRACES	952 ft <sup>2</sup>
<hr/>	
TOTAL UNCONDITIONED AREA	1,808 ft <sup>2</sup>



LEGEND

- 20 GAME ROOM  
20' 2" x 19'-5"
- 21 BEDROOM  
15'-2" x 15'-11"
- 22 BATHROOM
- 23 OFFICE / FLEX ROOM  
17'-8" x 12'-10"
- 24 STORAGE
- 25 POWDER ROOM
- 26 SECONDARY SUITE  
15'-9" x 17'-2"
- 27 SECONDARY SUITE BATH
- 28 SECONDARY WALK-IN CLOSET
- 29 SECONDARY SUITE DECK



Floor plans are intended to give a general indication of the proposed layout only. Images and dimensions are not intended to form part of any contract or warranty.





WALKOUT VILLA MODERN  
FRONT VIEW



ARETÉ *collective*



Floor plans are intended to give a general indication of the proposed layout only. Images and dimensions are not intended to form part of any contract or warranty.



# WALKOUT VILLA MODERN

REAR VIEW



ARETÉ *collective*



Floor plans are intended to give a general indication of the proposed layout only. Images and dimensions are not intended to form part of any contract or warranty.